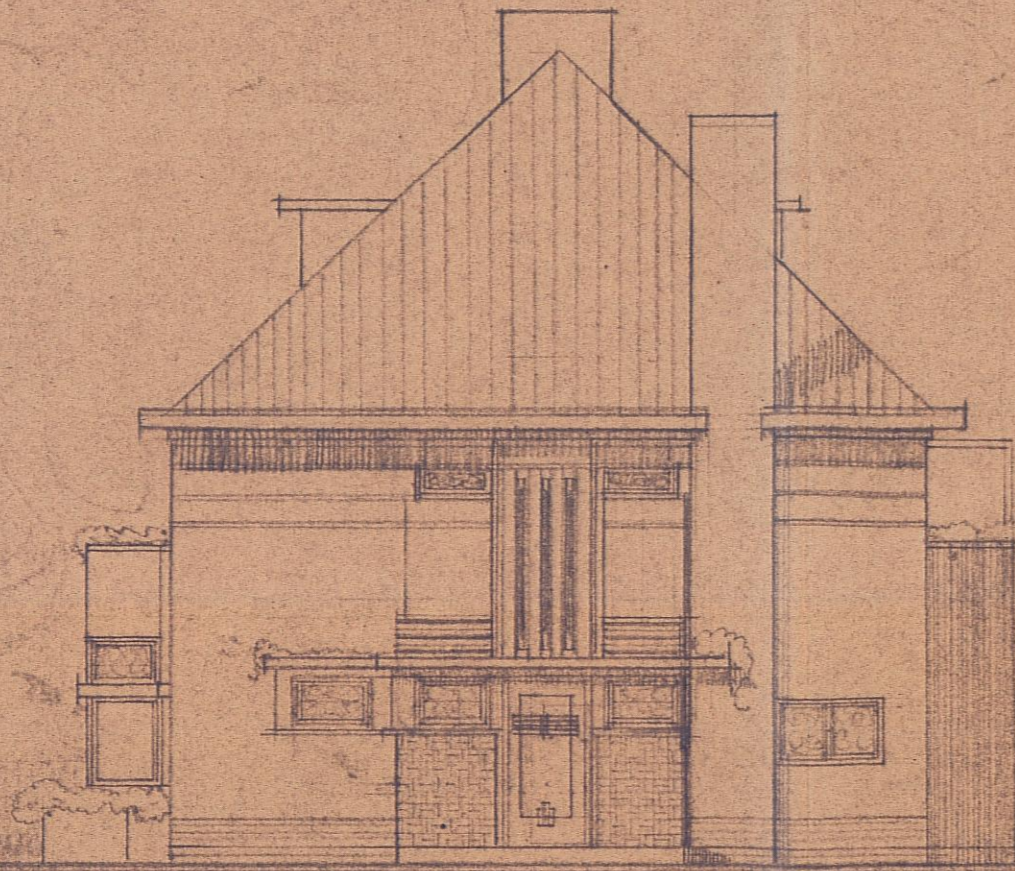
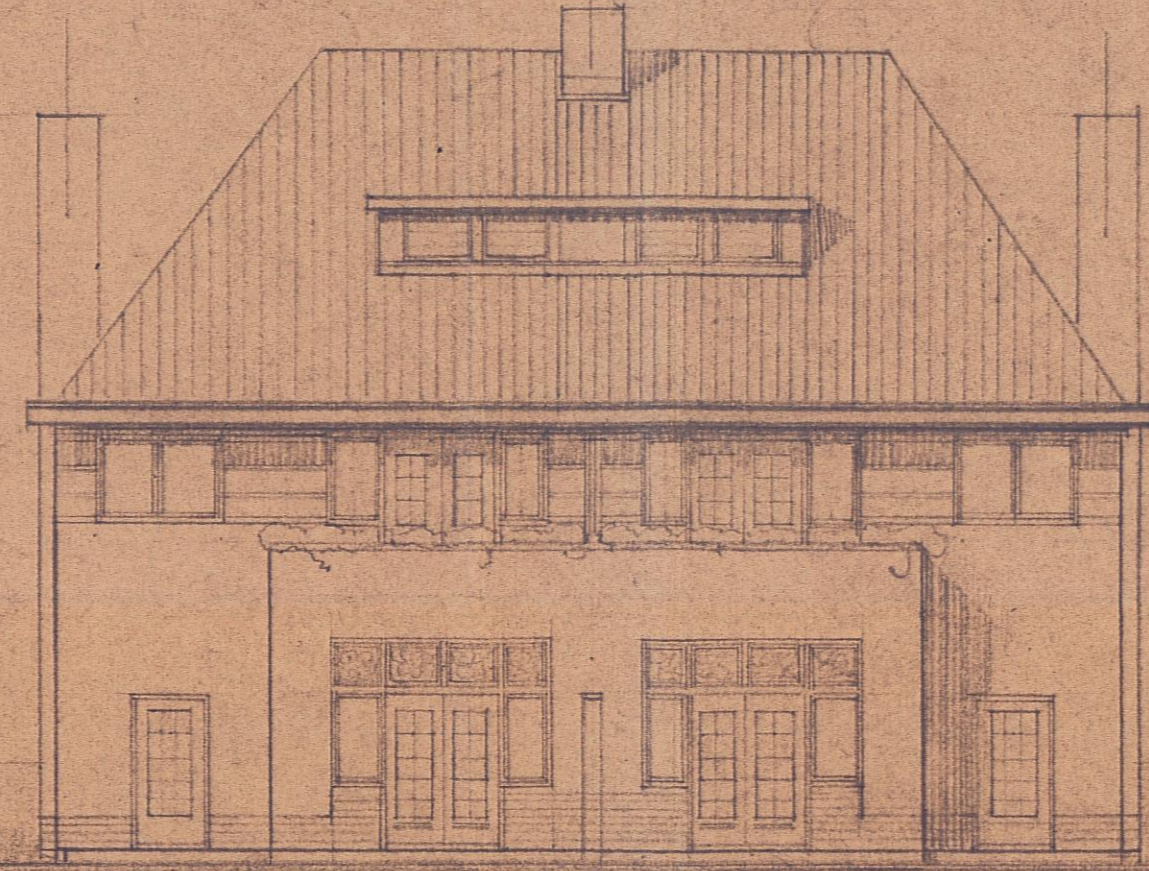


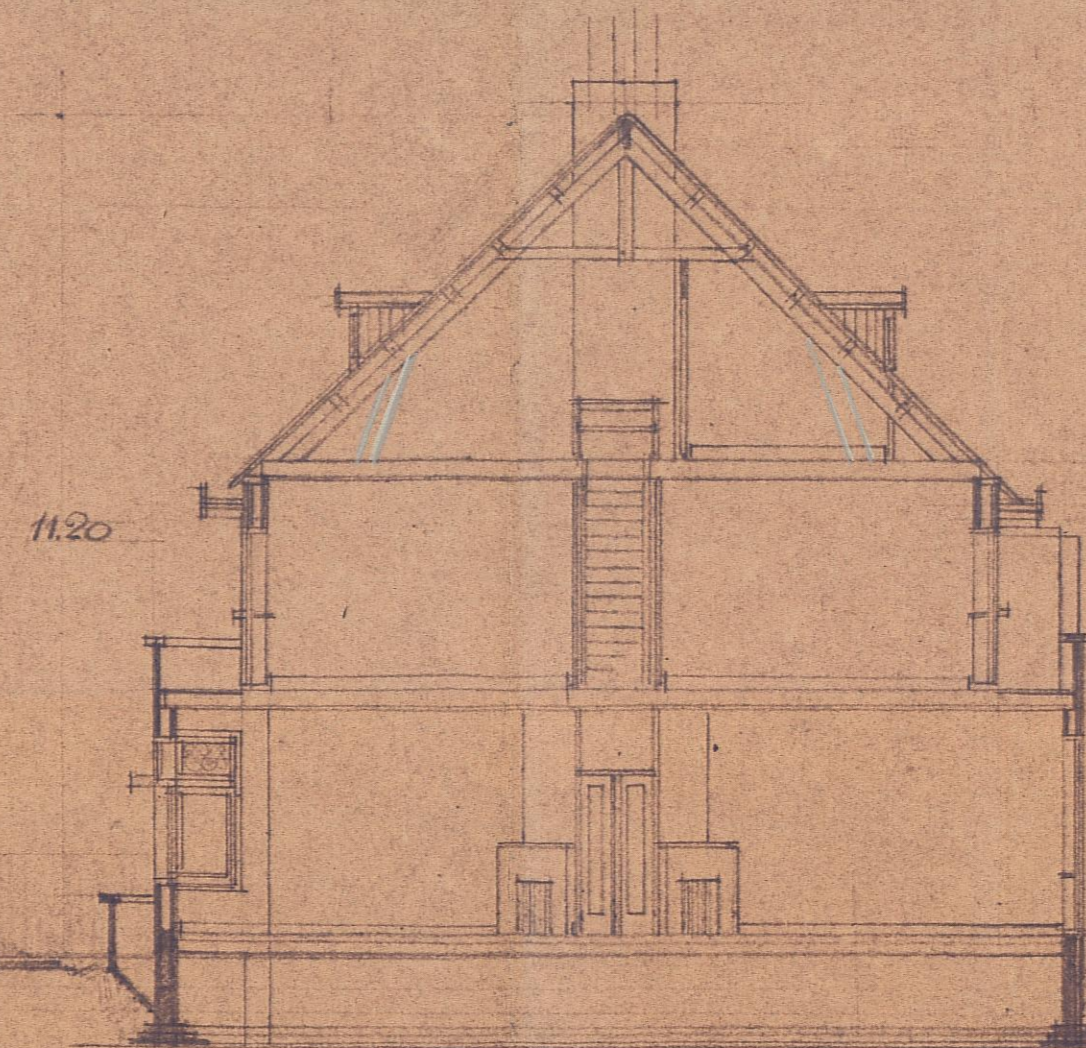
VOORGEVEL



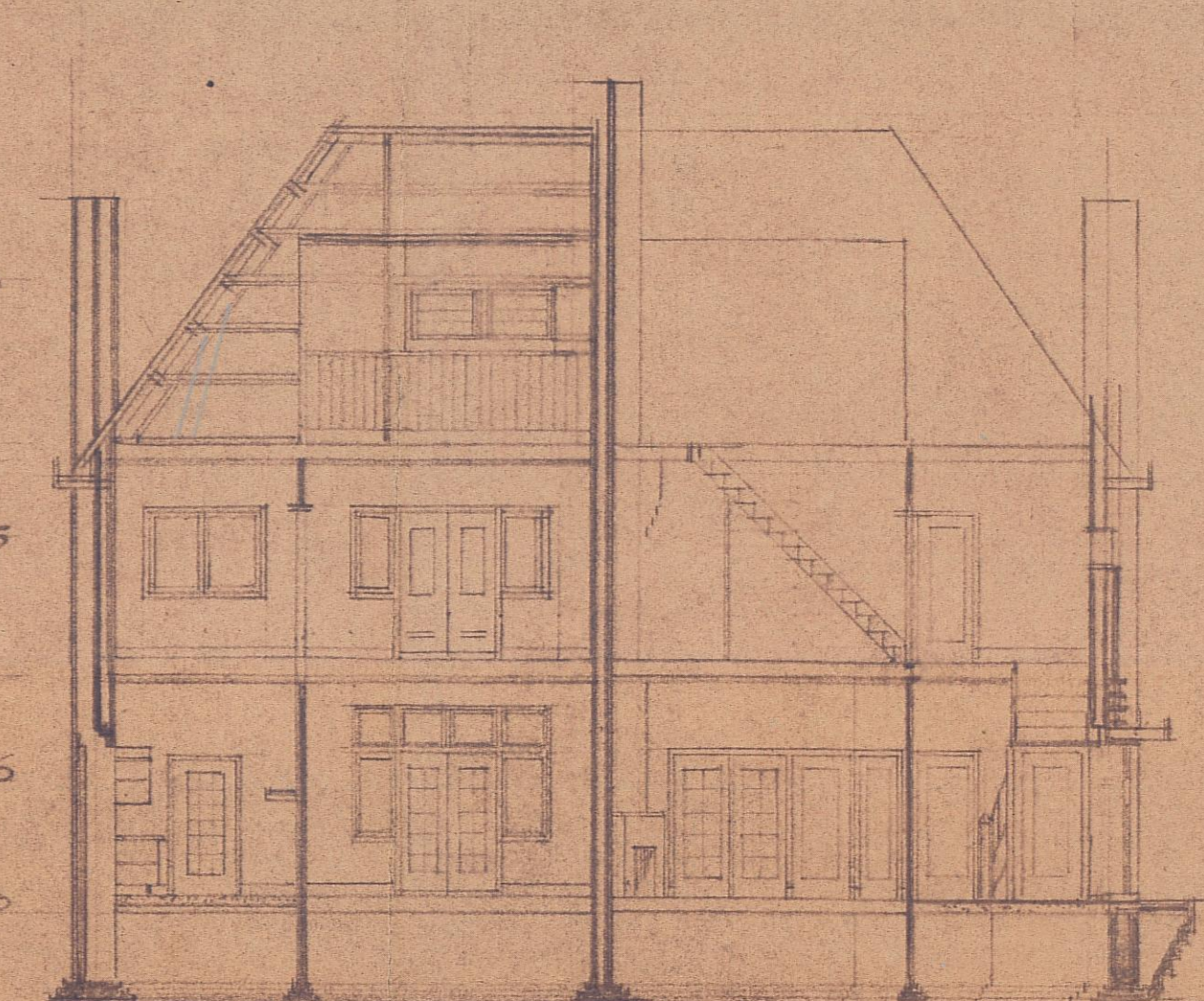
ZYGVELS



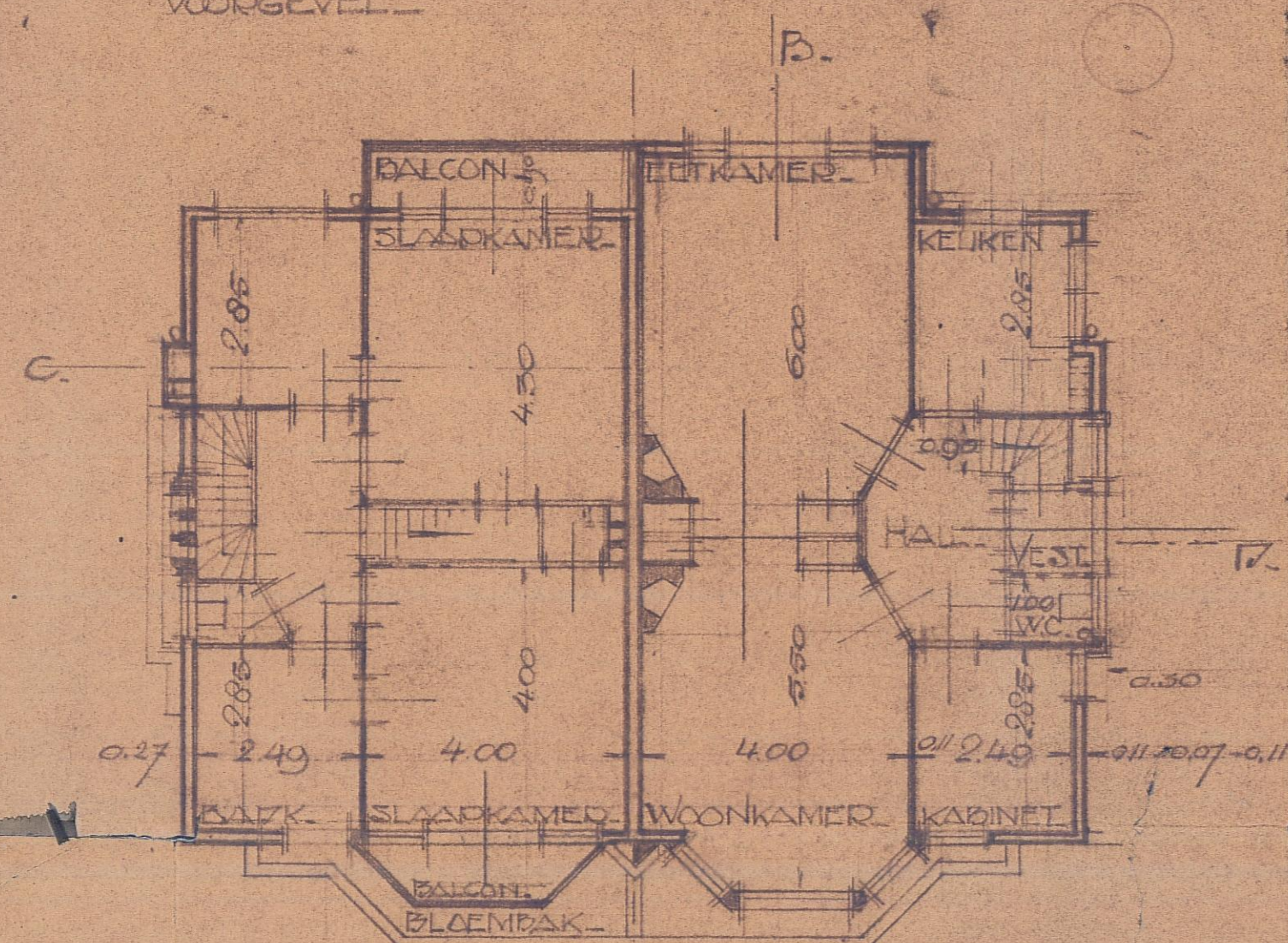
ACHTERGEVEL



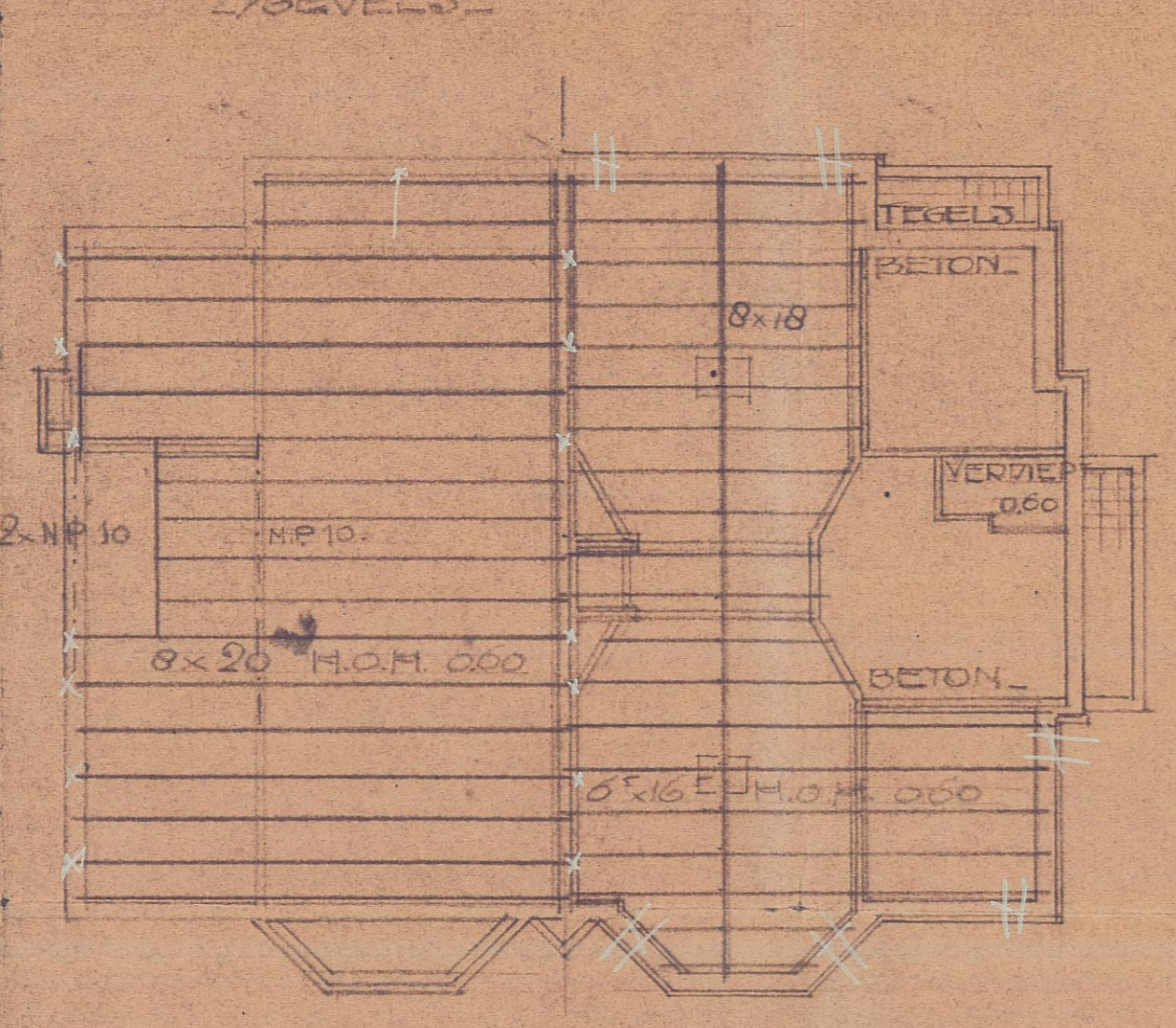
VOORSNIT A-B



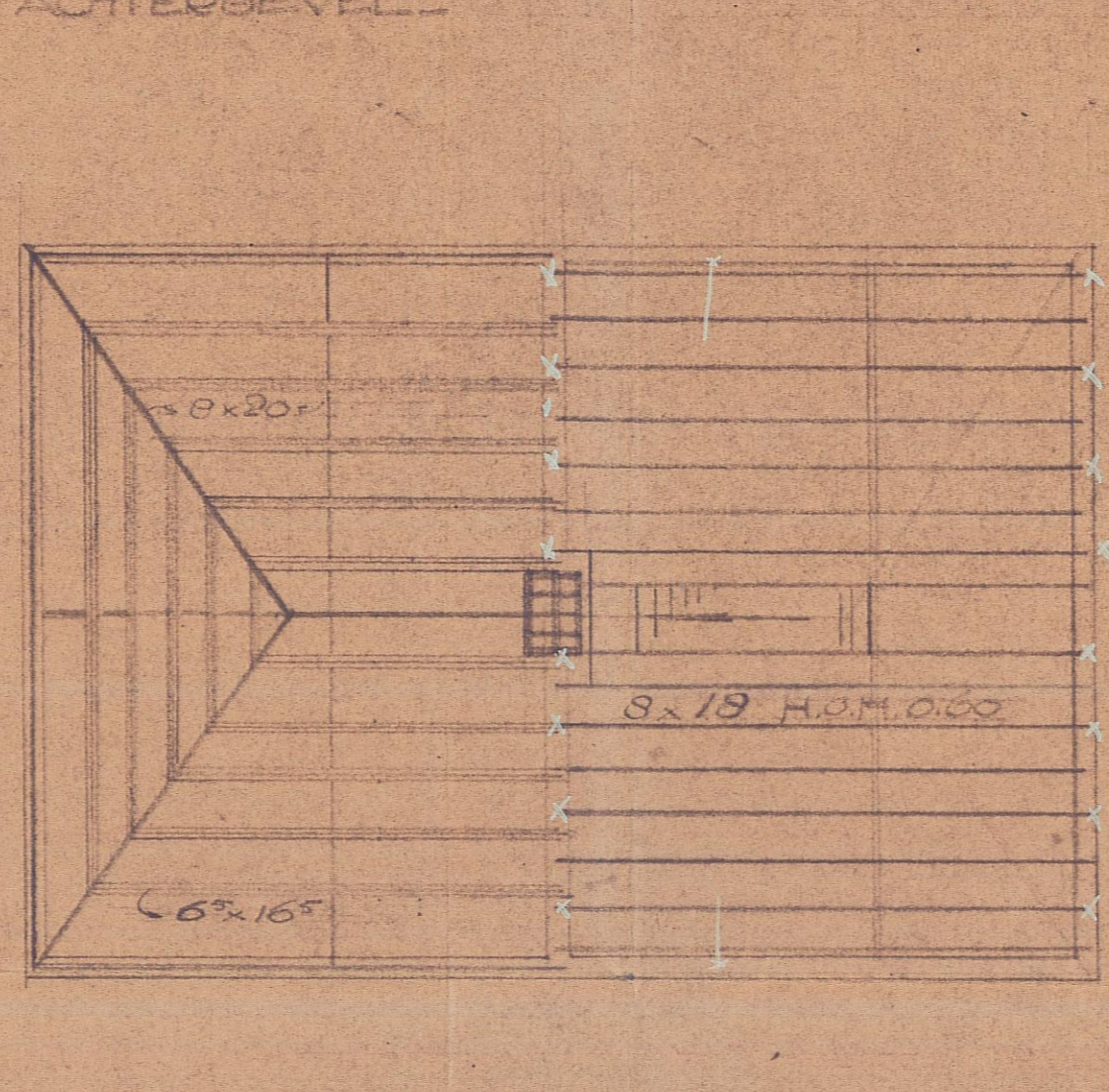
VOORSNIT C-D



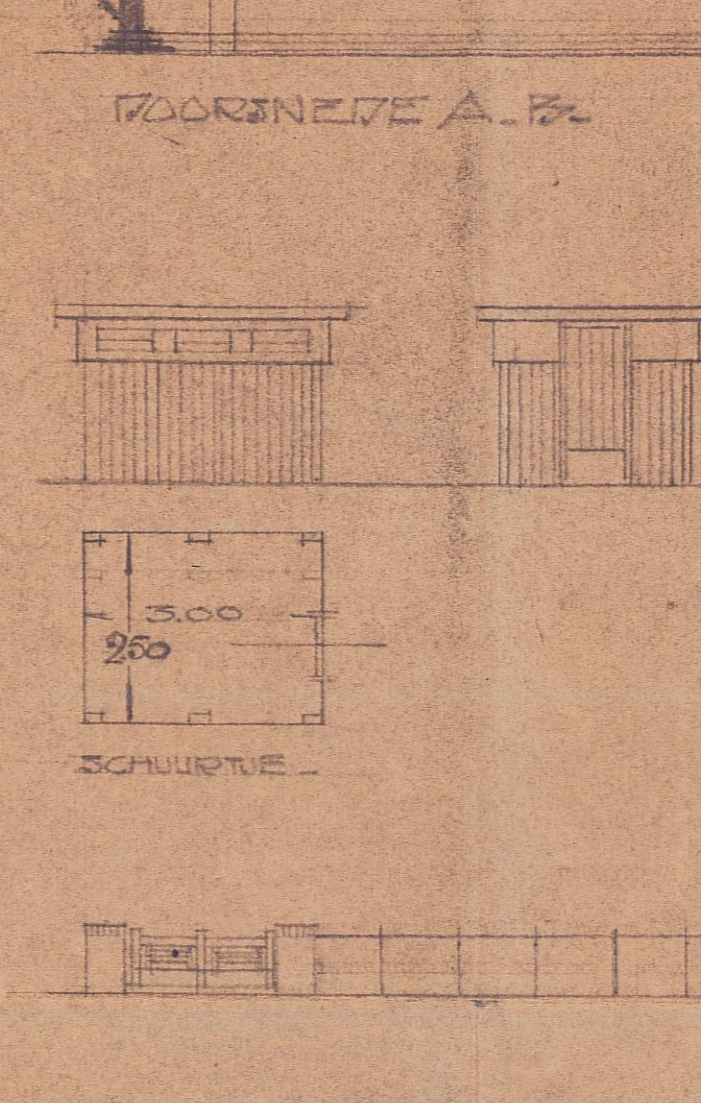
VERZIERING



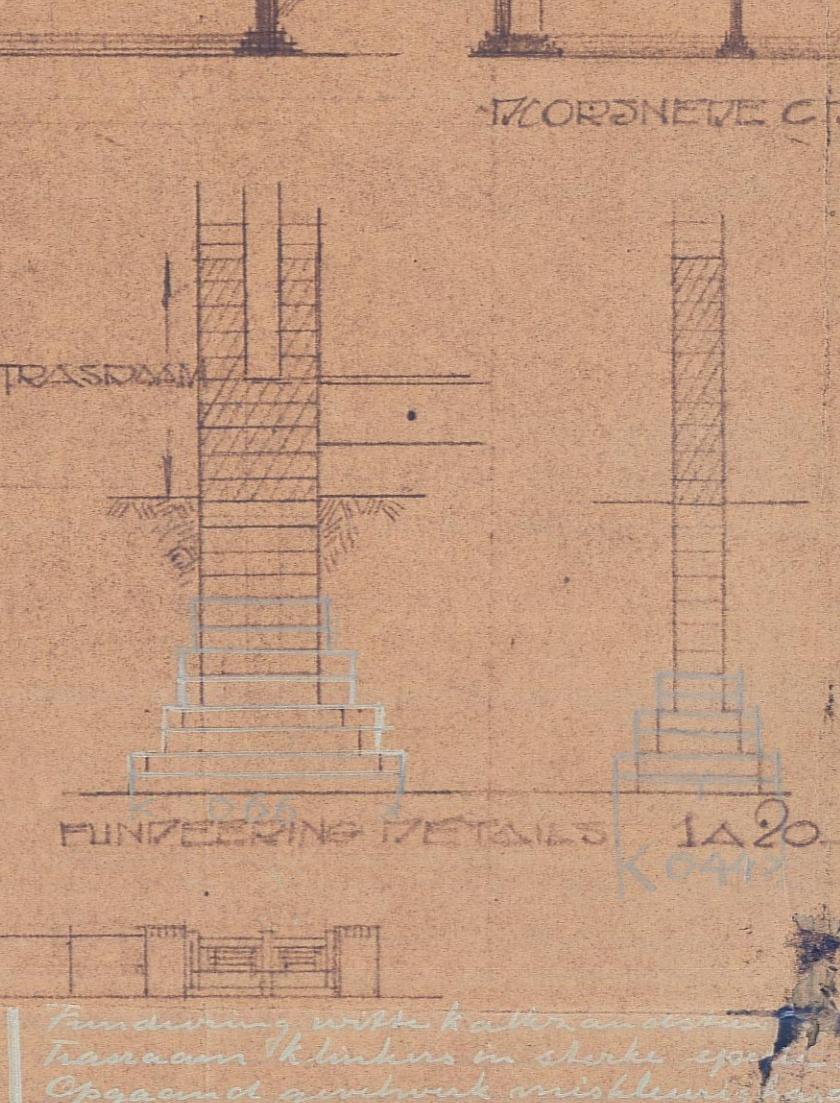
BALKLAGEN



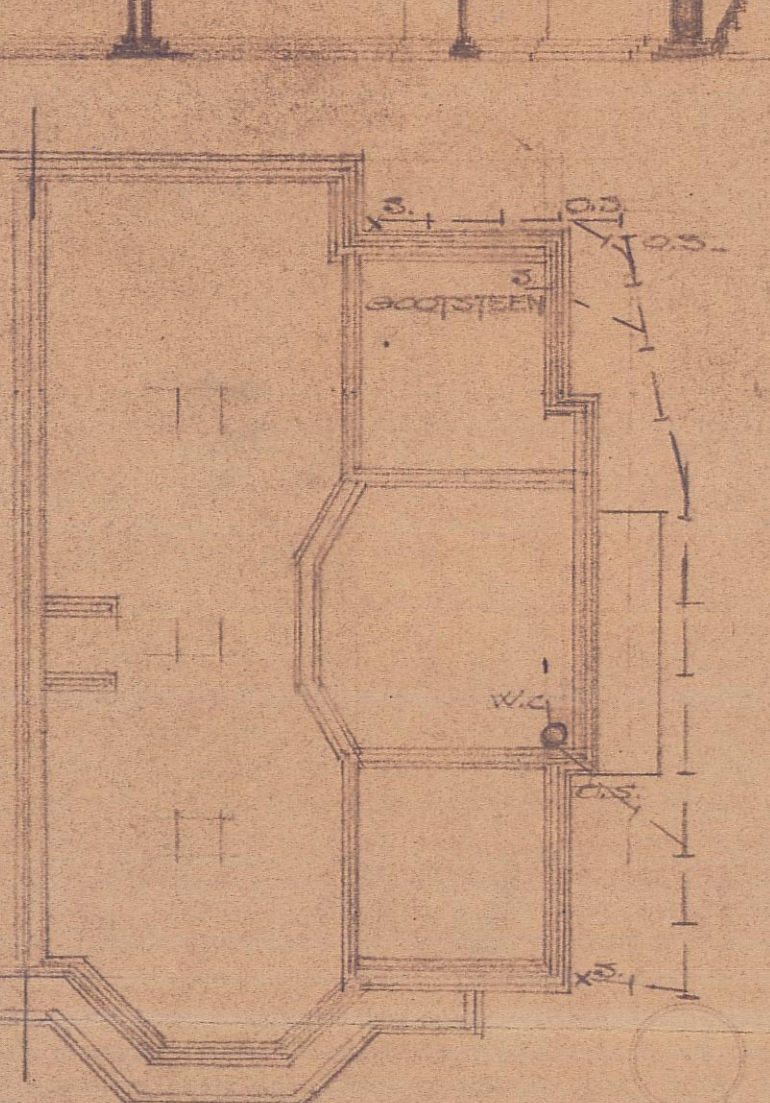
KAPPLAN



TERREINAFSLUITING



FUNDEERING EN DOLEERING



FUNDEERING EN DOLEERING

Fundering with beton...  
Hollandsche pannen...  
X = REGENWATERAFVOER...  
O = GEGEEL STAALWERK W.C.



INGEKOMEN

27. OCT. 1927

SOUWTOEZICHT  
HEEMSTEDE

2825

a

HEEMSTEDE  
INGEKOMEN  
2825 JAN. 1928  
Reg. No.

Behoert bij beschikking van  
Burgemeester en Wethouders van  
HEEMSTEDE, den 6 JAN. 1928

De Secretaris.

