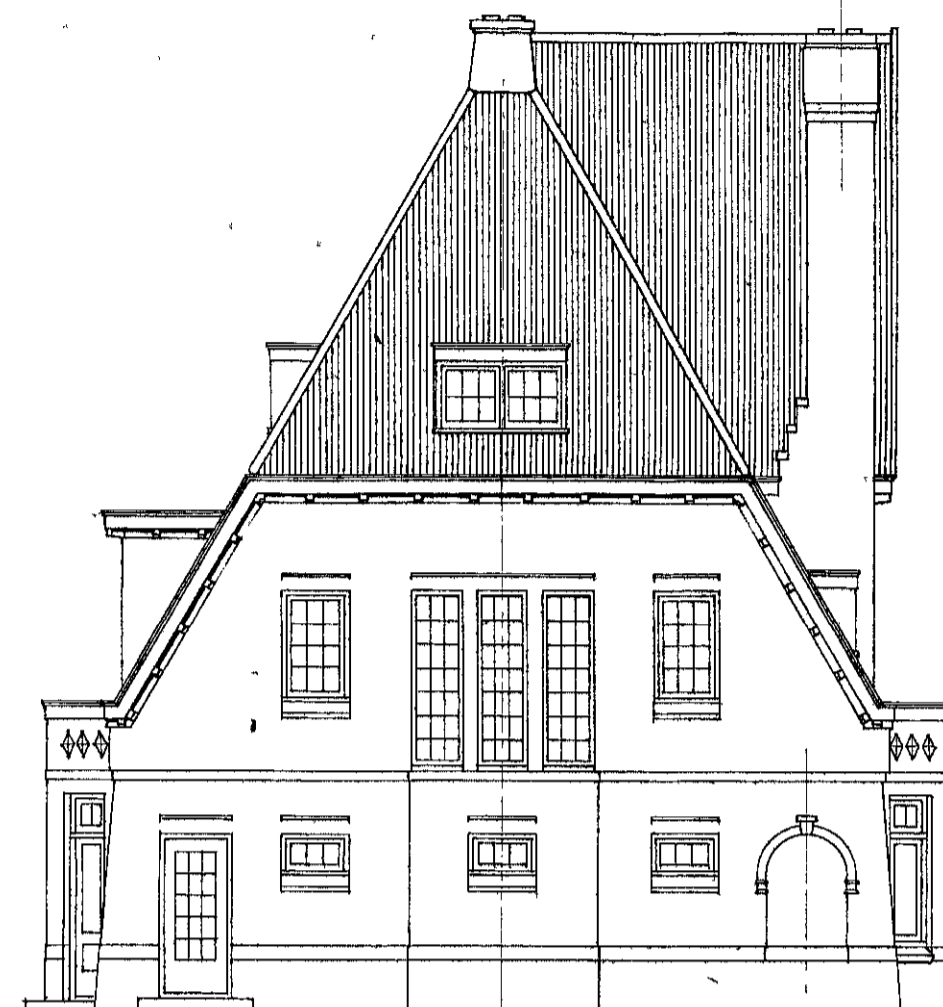




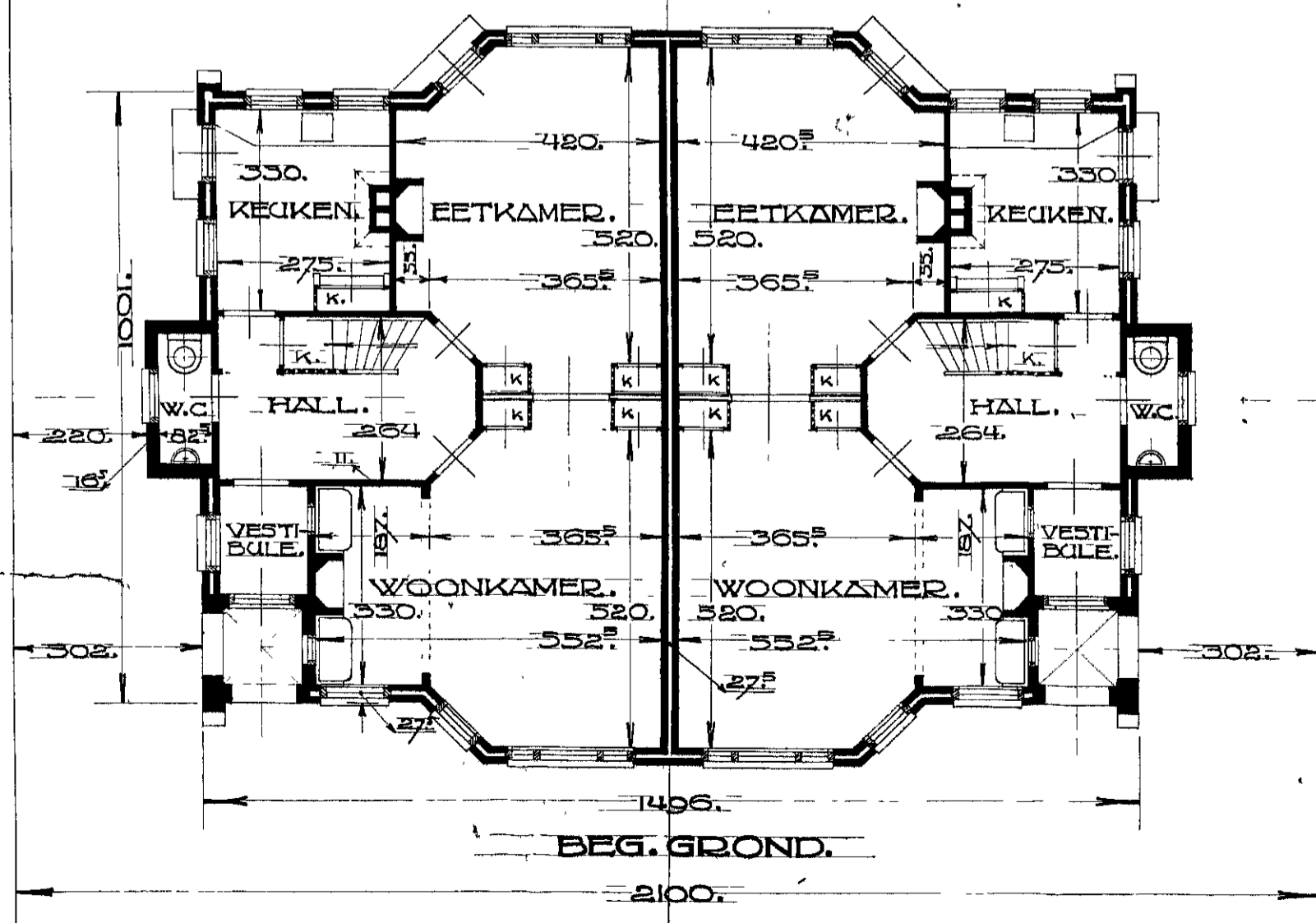
VOORGEVEL.



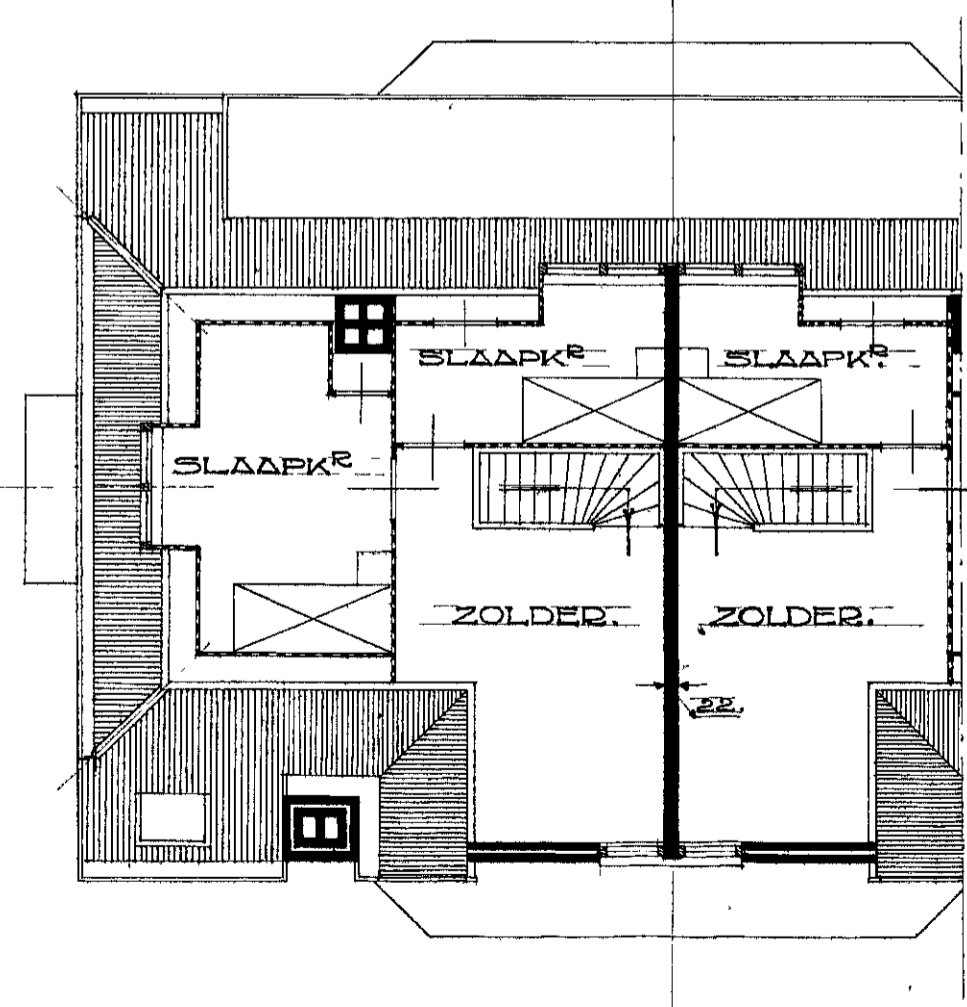
ZYGEL.



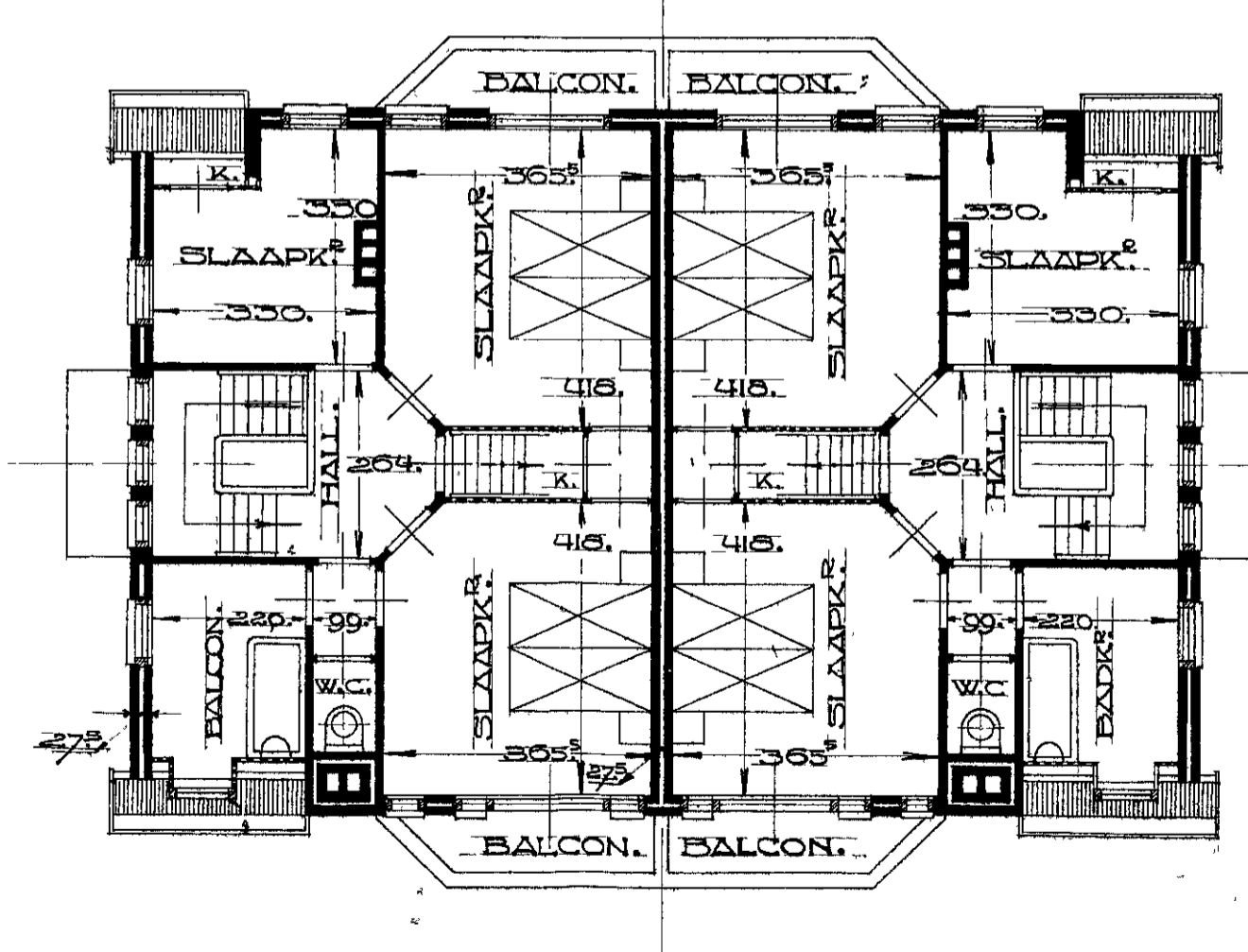
ACHTERGEVEL.



BEG. GROND.



ZOLDER.



VERDEPING.

HEEMSTEDE  
INGEKOMEN  
\* 5 - NOV. 1925 \*  
Reg. №

220  
II a

SAARE WERKEN  
HEEMSTEDE  
INGEKOMEN  
6 - NOV 1925  
Reg. №

*He*

Beheert bij beschikking van  
Burgemeester en Wethouders van  
HEEMSTEDE, den 24 NOV 1925  
De Secretaris.

*Beheert*

Volg. van B. en W. van  
24. 11. 1925  
№ 10

*Dijkhuis  
Landbouw  
Afdeling*